

LOWER FLOOR

242 SQ. FT.

8'8" CEILING

MAIN FLOOR

630 SQ. FT.

9'0" CEILING

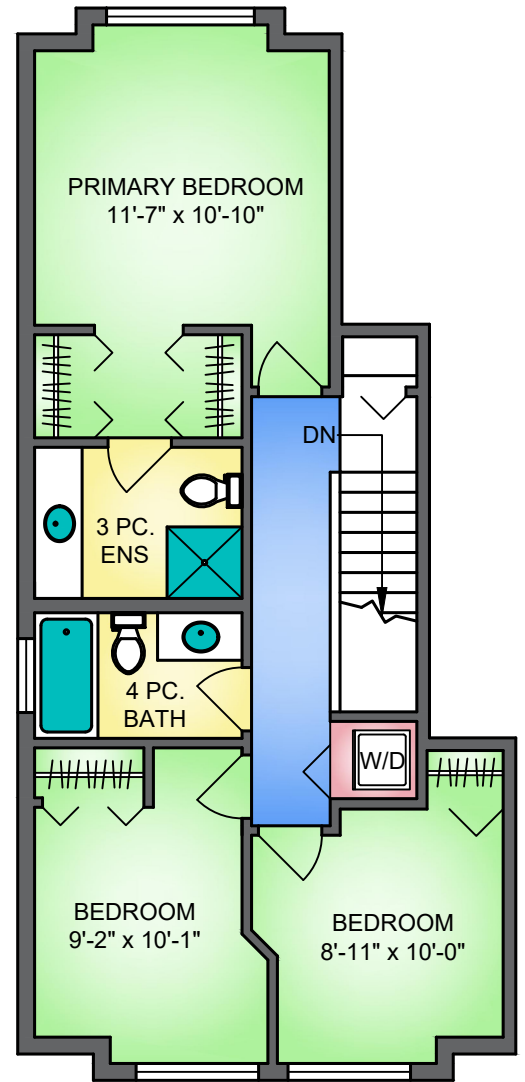
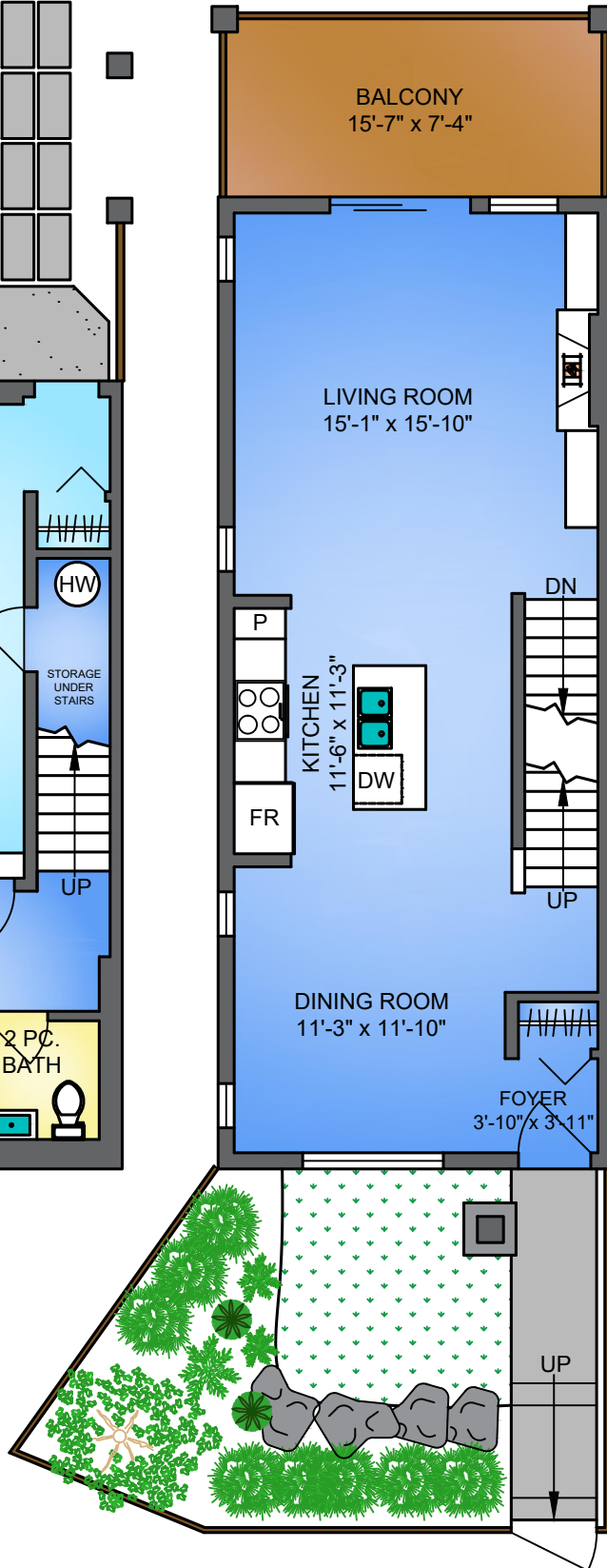
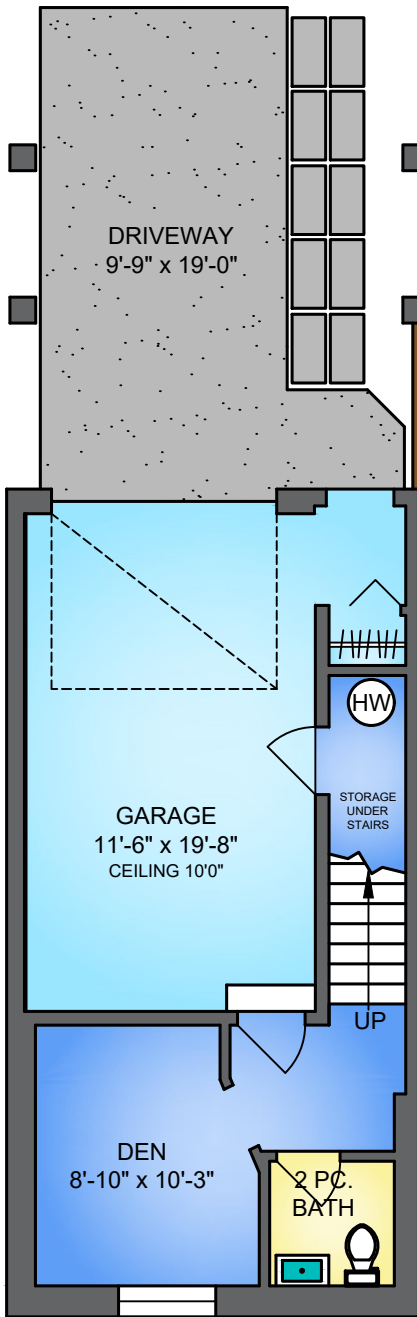
UPPER FLOOR

655 SQ. FT.

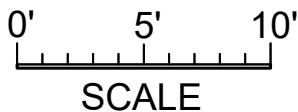
8'0" CEILING



RodRheaRyan.com
Rod Hayes Personal Real Estate Corporation
Royal LePage Sterling Realty



NORTH



PROPERMEASURE FROM PRECISION TO PERFECTION 604-786-4191 jeff@propermeasure.com www.propermeasure.com

57 13819 232 STREET, MAPLE RIDGE
JANUARY 21, 2024
PREPARED BY PROPER MEASURE.
FOR THE EXCLUSIVE USE OF ROD HAYES.
PLANS MAY NOT BE 100% ACCURATE, IF CRITICAL BUYER TO VERIFY. E&O INSURED.

FLOOR	AREA (SQ. FT.)		
	FINISHED	GARAGE	DECK / PATIO
MAIN	630	-	115
UPPER	655	-	-
LOWER	242	267	-
TOTAL	1527	267	115